



2 Gordon Street , Coventry, CV1 3ES

£1,854 Per Calendar Month

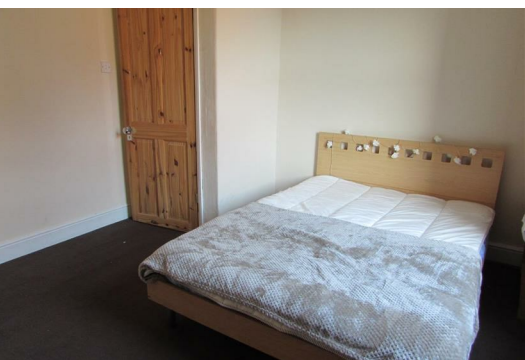


ZERO DPEOSIT OPTION AVAILABLE

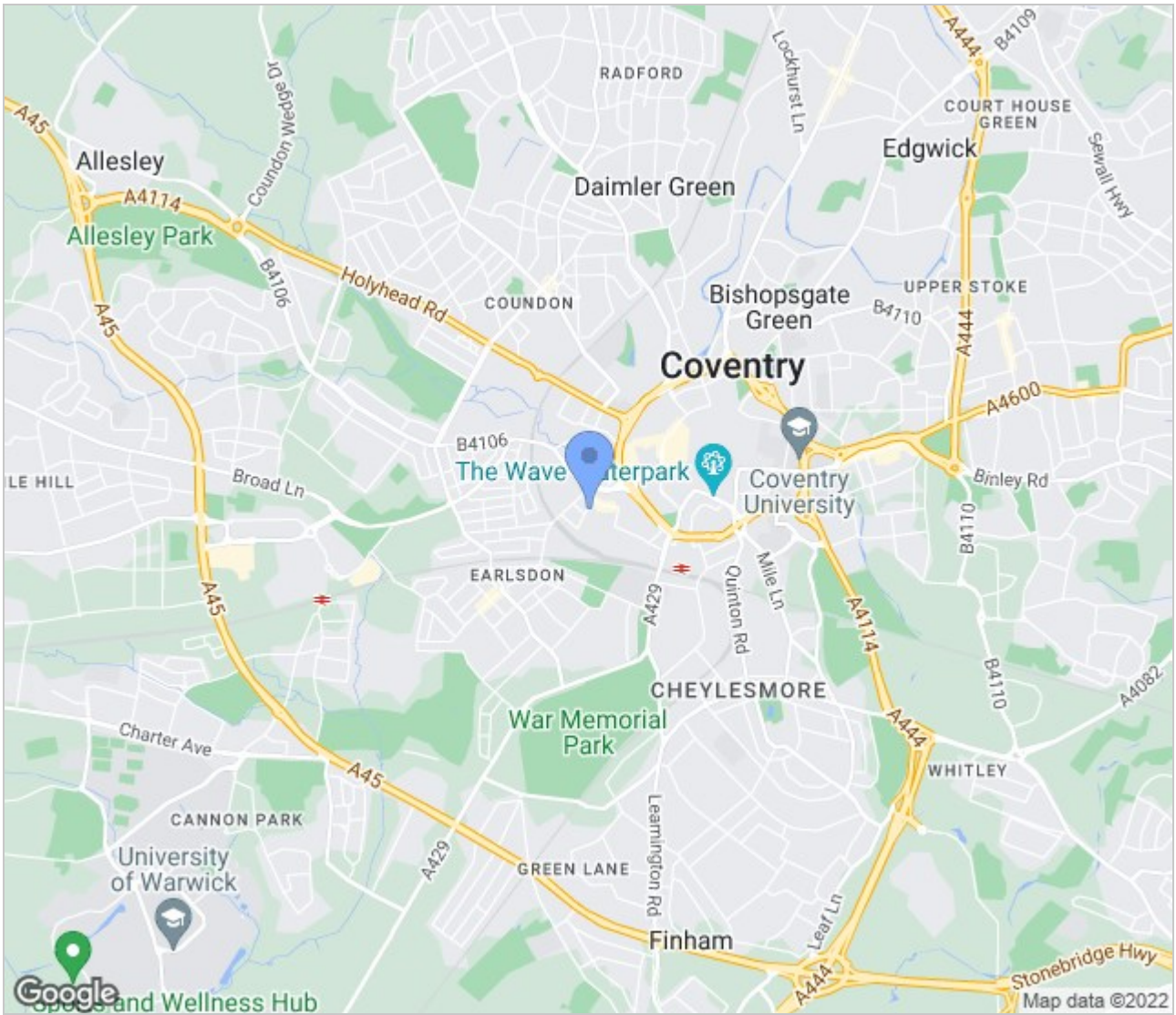
This Spacious 4 Bedroom Student Property Ideally Located for Coventry & Warwick University, As Well Earlsdon High Street Which is Great For Bars, Restaurants and Shops! – The Property Benefits Of En-suite Facilities

- The property briefly comprises of the following:
- Kitchen diner including white goods & TV
- Large ground floor bathroom including both a shower and a bath
- Lounge with leather sofas
- Carpet throughout the lounge and the bedrooms 4 Double bedrooms (3 of which benefit from en-suite shower rooms)
- Furnished throughout to suit your studies
- Garden to the rear of the property

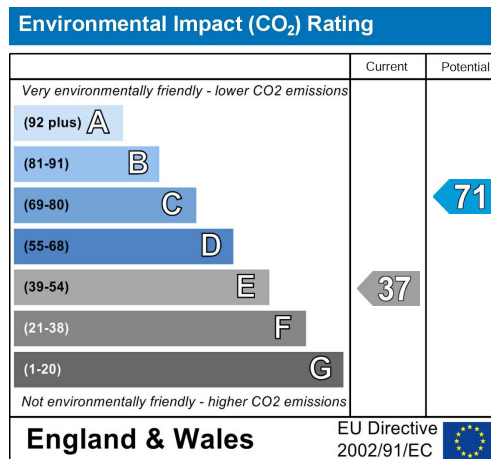
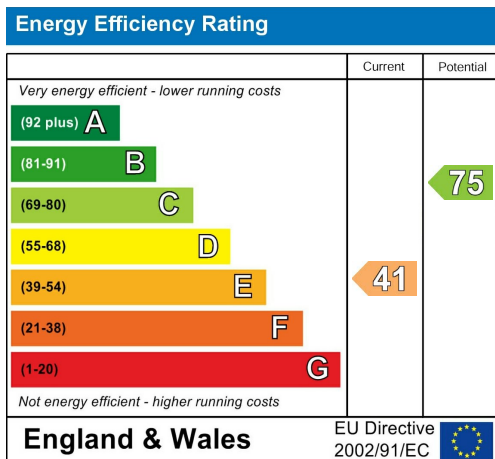
Suggested rent split:
 1 Double Room: £399.00pcm
 3 En-suite Rooms: £485.00pcm



Area Map



Energy Efficiency Graph



These particulars, whilst believed to be accurate are set out as a general outline only for guidance and do not constitute any part of an offer or contract. Intending purchasers should not rely on them as statements of representation of fact, but must satisfy themselves by inspection or otherwise as to their accuracy. No person in this firm's employment has the authority to make or give any representation or warranty in respect of the property.

GLB Property Services Ltd
Bayley House, 22-23 Bayley Lane
Coventry, CV1 5RJ

T. 02476 433416

info@glbpropertyservices.com
www.glbpropertyservices.com

